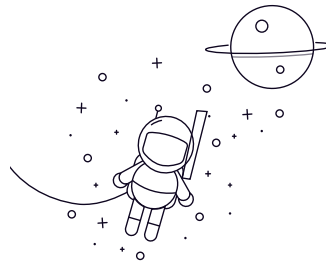


GACZ..S



| seleccionar Consulta | Número de rodamiento | Dimensión total (mm) | | | | | | | | | | | Carga nominal (kN) | | Peso kg |
|----------------------|----------------------|----------------------|-------|-------|-------|--------|-------|-------|------|-----------------------|-----|------------|--------------------|--|---------|
| | | rek | D | B | C | t | dk | S | A | rsr _{1s} max | un° | carga viva | Carga estática | | |
| GACZ12S | 12.7 | 22.225 | 6.86 | 4.83 | 7.62 | 18.26 | 1.3 | 2.39 | 0.51 | 7 | 6 | 18 | 0.013 | | |
| GACZ12S | 0.5 | 0.875 | 0.27 | 0.19 | 0.3 | 0.719 | 0.051 | 0.094 | 0.02 | 7 | 6 | 18 | 0.013 | | |
| GACZ15S | 15.875 | 26.988 | 8.64 | 6.35 | 9.4 | 22.83 | 1.48 | 2.77 | 0.76 | 6 | 10 | 31 | 0.025 | | |
| GACZ15S | 0.625 | 1.0625 | 0.34 | 0.25 | 0.37 | 0.899 | 0.058 | 0.109 | 0.03 | 6 | 10 | 31 | 0.025 | | |
| GACZ19S | 19.05 | 31.75 | 10.41 | 7.87 | 11.18 | 27.43 | 1.79 | 3.18 | 1 | 6 | 16 | 47 | 0.038 | | |
| GACZ19S | 0.75 | 1.25 | 0.41 | 0.31 | 0.44 | 1.08 | 0.07 | 0.125 | 0.04 | 6 | 16 | 47 | 0.038 | | |
| GACZ22S | 22.225 | 36.512 | 12.19 | 9.65 | 13.21 | 31.95 | 2.02 | 4.37 | 2 | 5.5 | 22 | 66 | 0.049 | | |
| GACZ22S | 0.875 | 1.4375 | 0.48 | 0.38 | 0.52 | 1.258 | 0.08 | 0.172 | 0.08 | 5.5 | 22 | 66 | 0.049 | | |
| GACZ25S | 25.4 | 41.275 | 13.97 | 11.18 | 15.24 | 36.5 | 2.54 | 5.16 | 2 | 6 | 29 | 87 | 0.085 | | |
| GACZ25S | 1 | 1.625 | 0.55 | 0.44 | 0.6 | 1.437 | 0.1 | 0.203 | 0.08 | 6 | 29 | 87 | 0.085 | | |
| GACZ31S | 31.75 | 50.8 | 17.78 | 13.97 | 18.8 | 45.59 | 3.36 | 5.94 | 2 | 6 | 47 | 142 | 0.159 | | |
| GACZ31S | 1.25 | 2 | 0.7 | 0.55 | 0.74 | 1.795 | 0.132 | 0.234 | 0.08 | 6 | 47 | 142 | 0.159 | | |
| GACZ34S | 34.925 | 55.562 | 19.56 | 15.24 | 21.34 | 49.2 | 3.69 | 7.14 | 2.54 | 4 | 53 | 159 | 0.213 | | |
| GACZ34S | 1375 | 2.1875 | 0.77 | 0.6 | 0.84 | 1.937 | 0.145 | 0.281 | 0.1 | 4 | 53 | 159 | 0.213 | | |
| GACZ38S | 38.1 | 61.912 | 21.34 | 16.76 | 23.11 | 54.74 | 3.93 | 7.92 | 2.54 | 5.5 | 66 | 197 | 0.301 | | |
| GACZ38S | 1.5 | 2.4375 | 0.84 | 0.66 | 0.91 | 2.155 | 0.155 | 0.312 | 0.1 | 5.5 | 66 | 197 | 0.301 | | |
| GACZ44S | 44.45 | 71.438 | 24.89 | 20.07 | 27.18 | 63.88 | 4.72 | 8.33 | 2.54 | 6 | 91 | 273 | 0.458 | | |
| GACZ44S | 1.75 | 2.8125 | 0.98 | 0.79 | 1.07 | 2.515 | 0.186 | 0.328 | 0.1 | 6 | 91 | 273 | 0.458 | | |
| GACZ50S | 50.8 | 80.962 | 28.7 | 23.37 | 31.24 | 73.02 | 5.51 | 9.52 | 3.56 | 5.5 | 122 | 365 | 0.671 | | |
| GACZ50S | 2 | 3.1875 | 1.13 | 0.92 | 1.23 | 2.875 | 0.217 | 0.375 | 0.14 | 5.5 | 122 | 365 | 0.671 | | |
| GACZ57S | 57.15 | 90.488 | 32.26 | 26.67 | 35.31 | 82.17 | 6.18 | 11.51 | 3.56 | 5.5 | 155 | 466 | 0.948 | | |
| GACZ57S | 2.25 | 3.5625 | 1.27 | 1.05 | 1.39 | 3.235 | 0.243 | 0.453 | 0.14 | 5.5 | 155 | 466 | 0.948 | | |
| GACZ63S | 63.5 | 100.013 | 36.07 | 29.97 | 39.12 | 91.19 | 6.79 | 12.7 | 3.56 | 5 | 196 | 589 | 1.13 | | |
| GACZ63S | 2.5 | 3.9375 | 1.42 | 1.18 | 1.54 | 3.59 | 0.267 | 0.5 | 0.14 | 5 | 196 | 589 | 1.13 | | |
| GACZ69S | 69.85 | 111.125 | 39.62 | 32.38 | 43.18 | 100.33 | 7.46 | 13.08 | 4.6 | 5 | 231 | 694 | 1.75 | | |
| GACZ69S | 2.75 | 4.375 | 1.56 | 1.275 | 1.7 | 3.95 | 0.294 | 0.515 | 0.18 | 5 | 231 | 694 | 1.75 | | |
| GACZ76S | 76.2 | 120.65 | 43.43 | 35.69 | 47.24 | 109.52 | 8.17 | 14.68 | 4.6 | 5 | 279 | 838 | 2.28 | | |
| GACZ76S | 3 | 4.75 | 1.71 | 1.405 | 1.86 | 4.312 | 0.322 | 0.578 | 0.18 | 5 | 279 | 838 | 2.28 | | |

GACZ..S

| | | | | | | | | | | | | | |
|---------|-------|---------|-------|-------|-------|--------|-------|-------|------|---|-----|-----|------|
| GACZ82S | 82.55 | 130.175 | 47.24 | 39.24 | 51.56 | 118.74 | 9.04 | 16.66 | 4.6 | 5 | 332 | 995 | 2.89 |
| GACZ82S | 3.25 | 5.125 | 1.86 | 1.545 | 2.03 | 4.675 | 0.356 | 0.656 | 0.18 | 5 | 332 | 995 | 2.89 |