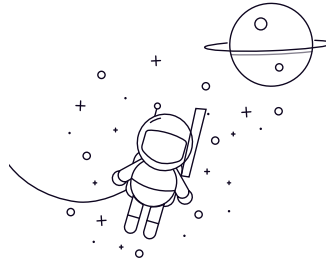


# UK200 Series



seleccionar	Consulta	Rodamiento No.	Diámetro del eje d		Dimensiones (mm)								Carga básica Clasificación (kg)	Estática básica Clasificación de carga (kg)	Peso (kg)
			(en)	(mm)	D	l	rek	Bi	Ser	t	y	w			
UK205+HE2305	3/4		52	35	25	23	17	4.5	8	38	1100	710	0.25		
UK205+HA2305	13/16		52	35	25	23	17	4.5	8	38	1100	710	0.24		
UK205+H2305		20	52	35	25	23	17	4.5	8	38	1100	710	0.24		
UK206+HS2306	7/8		62	38	30	26	19	5.1	8	45	1540	1020	0.42		
UK206+HA2306	15/16		62	38	30	26	19	5.1	8	45	1540	1020	0.41		
UK206+HE2306	1		62	38	30	26	19	5.1	8	45	1540	1020	0.37		
UK206+H2306		25	62	38	30	26	19	5.1	8	45	1540	1020	0.4		
UK207+HS2307	1-1/8		72	43	35	27	20	5.8	9	52	2030	1400	0.57		
UK207+HA2307	1-3/16		72	43	35	27	20	5.8	9	52	2030	1400	0.55		
UK207+H2307		30	72	43	35	27	20	5.8	9	52	2030	1400	0.55		
UK208+HE2308	1-1/4		80	46	40	29	21	6.2	10	58	2300	1600	0.78		
UK208+HA2308	1-5/16		80	46	40	29	21	6.2	10	58	2300	1600	0.75		
UK208+HS2308	1-3/8		80	46	40	29	21	6.2	10	58	2300	1600	0.72		
UK208+H2308		35	80	46	40	29	21	6.2	10	58	2300	1600	0.72		
UK209+HA2309	1-7/16		85	50	45	30	22	6.5	11	65	2560	1810	0.89		
UK209+HE2309	1-1/2		85	50	45	30	22	6.5	11	65	2560	1810	0.84		
UK209+HS2309	1-5/8		85	50	45	30	22	6.5	11	65	2560	1810	0.77		
UK209+H2309		40	85	50	45	30	22	6.5	11	65	2560	1810	0.8		
UK210+HA2310	1-11/16		90	55	50	31	23	6.5	12	70	2750	2020	0.98		
UK210+HE2310	1-3/4		90	55	50	31	23	6.5	12	70	2750	2020	0.95		
UK210+H2310		45	90	55	50	31	23	6.5	12	70	2750	2020	0.93		
UK211+HS2311	1-7/8		100	59	55	33	24	7.3	12	75	3400	2550	1.28		
UK211+HA2311	1-15/16		100	59	55	33	24	7.3	12	75	3400	2550	1.22		
UK211+HE2311	2		100	59	55	33	24	7.3	12	75	3400	2550	1.17		
UK211+H2311		50	100	59	55	33	24	7.3	12	75	3400	2550	1.19		
UK212+HA2312	2-1/16		110	62	60	36	26	7.7	13	80	4100	3150	1.62		
UK212+HS2312	2-1/8		110	62	60	36	26	7.7	13	80	4100	3150	1.56		

## UK200 Series

---

UK212+H2312		55	110	62	60	36	26	7.7	13	80	4100	3150	1.52
UK213+HA2313	2-3/16		120	65	65	38	27	8.3	14	85	4480	3470	2.1
UK213+HE2313	2-1/4		120	65	65	38	27	8.3	14	85	4480	3470	2.04