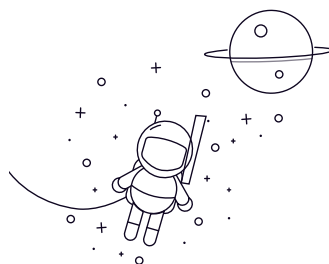


5200 Series



seleccionar Consulta	Rodamiento No.	Dimensiones límite (mm)					Capacidades de carga básicas (kN)		Velocidad límite (rpm)		Masa Kg
		rek	D	B	rs min	Dinámico(Cr)	Estático (Cor)	Grasa	Aceite		
5200	10	30	14.3	0.6	6.95	3.8	14000	19000	0.049		
5201	12	32	15.9	0.6	9.15	5.05	13000	17000	0.057		
5202	15	35	15.9	0.6	10	6.05	11000	15000	0.064		
5203	17	40	17.5	0.6	12.8	7.9	9900	13000	0.096		
5204	20	47	20.6	1	19	12.1	8800	12000	0.153		
5205	25	52	20.6	1	20.6	14.3	7300	9800	0.175		
5206	30	62	23.8	1	28.5	20.4	6300	8400	0.286		
5207	35	72	27	1.1	38	27.8	5500	7400	0.436		
5208	40	80	30.2	1.1	42.5	32.5	4900	6600	0.59		
5209	45	85	30.2	1.1	48	37	4400	5900	0.64		
5210	50	90	30.2	1.5	51	42	4000	5300	0.689		
5211	55	100	33.3	1.5	63	53	3600	4900	0.986		
5212	60	110	36.5	1.5	71.5	58.5	3400	4500	1.27		
5213	65	120	38.1	1.5	83.5	72.5	3100	4200	1.57		
5214	70	125	39.7	1.5	90.5	79.5	2900	3900	1.8		
5215	75	130	41.3	1.5	90	80.5	2700	3600	1.9		
5216	80	140	44.4	2	106	95.5	2500	3400	2.39		
5217	85	150	49.2	2	112	106	2400	3200	3.06		
5218	90	160	52.4	2	140	129	2200	3000	3.73		