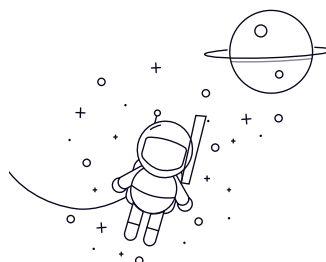


7300AC Series



seleccionar Consulta	Rodamiento No.	Dimensiones límite (mm)			Capacidades de carga básicas (kN)		Velocidad límite (rpm)		Masa Kg
		rek	D	B	Dinámico(Cr)	Estático (Cor)	Grasa	Aceite	
7300AC	10	35	11	9.5	4.4	18000	26000	0.053	
7301AC	12	37	12	11.5	5.4	17000	24000	0.06	
7302AC	15	42	13	12.5	6.2	15000	21000	0.084	
7303AC	17	47	14	15	7.7	13000	19000	0.16	
7304AC	20	52	15	17.9	9.6	12000	17000	0.15	
7305AC	25	62	17	27	15.6	9500	14000	0.23	
7306AC	30	72	19	32.8	20.4	8500	12000	0.35	
7307AC	35	80	21	38.2	24.9	7500	10000	0.47	
7308AC	40	90	23	47	31.1	6700	9000	0.66	
7309AC	45	100	25	61.6	41.2	6000	8000	0.86	
7310AC	50	110	27	71.9	48.5	5600	7500	1.08	
7311AC	55	120	29	83.4	58	5000	6700	1.42	
7312AC	60	130	31	95.2	67.2	4800	6300	1.71	
7313AC	65	140	33	38	33.6	4300	5600	2.23	
7314AC	70	150	35	118.8	88.2	4000	5300	2.67	
7315AC	75	160	37	134.4	99.8	3800	5000	3.1	
7316AC	80	170	39	149.5	107.7	3600	4800	3.6	
7317AC	85	180	41	154.3	122.3	3400	4500	4.38	
7318AC	90	190	43	177.6	153.5	3200	4300	5.6	
7319AC	95	200	45	193.3	172.6	3200	4200	6.6	

7300AC Series

7320AC	100	215	47	213.5	198.6	3000	4000	7.58
7321AC	105	225	49	226.7	216.6	2800	3800	8.85
7322AC	110	240	50	253.2	252.4	2600	3600	10.5