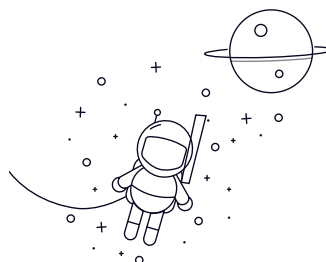


## 7200AC Series



seleccionar Consulta	Rodamiento No.	Dimensiones límite (mm)			Capacidades de carga básicas (kN)		Velocidad límite (rpm)		Masa Kg
		rek	D	B	Dinámico(Cr)	Estático (Cor)	Grasa	Aceite	
7200AC	10	30	9	5.5	2.8	22000	28000	0.032	
7201AC	12	32	10	7.6	3.6	20000	25000	0.037	
7202AC	15	35	11	8.9	4.8	17000	22000	0.045	
7203AC	17	40	12	10.4	5.6	15000	20000	0.062	
7204AC	20	47	14	14	7.8	13000	18000	0.1	
7205AC	25	52	15	15.8	9.7	11000	16000	0.12	
7206AC	30	62	16	22.1	13.5	9000	13000	0.19	
7207AC	35	72	17	29.2	18	8000	11000	0.28	
7208AC	40	80	18	36.8	25.4	7500	10000	0.37	
7209AC	45	85	19	38.6	28.1	6700	9000	0.41	
7210AC	50	90	20	40.8	30.1	6300	8500	0.46	
7211AC	55	100	21	50.8	38.2	5600	7000	0.61	
7212AC	60	110	22	58.1	46	5300	7000	0.8	
7213AC	65	120	23	66.6	52.1	4800	6300	1	
7214AC	70	125	24	69.4	57	4500	5800	1.1	
7215AC	75	130	25	75.3	62.8	4300	5600	1.2	
7216AC	80	140	26	91.3	65.1	4000	5300	1.45	
7217AC	85	150	28	94.9	80.8	3800	5000	1.8	
7218AC	90	160	30	122	106.5	3600	4800	2.25	
7219AC	95	170	32	128.4	107.8	3400	4500	2.7	
7220AC	100	180	34	142.3	120.6	3200	4300	3.25	
7221AC	105	190	36	159	135.1	3000	4000	3.85	

### 7200AC Series

7222AC	110	200	38	176.3	151.2	2800	3800	4.55
7224AC	120	215	40	193.6	170.9	2400	3400	5.4
7226AC	130	230	40	196.4	200.1	2000	3000	6.45