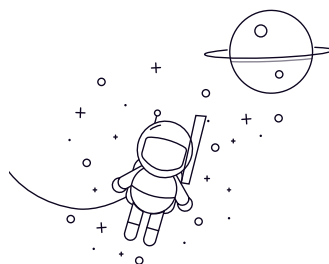


RN Series



seleccionar Consulta Designación	Dimensiones principales (mm)			Clasificaciones de carga básicas (KN)		Velocidad limitada (rpm)	Peso (kg)	
	rek	Ew	B	Dinámico(Cr)	Estático (Cor)	Grasa Aceite (kg)		
RN203EM	17	40	12	19.3	17	10000	11000	0.08
RN204EM	17	40	14	25.8	24	12000	16000	0.08
RN205EM	25	45	15	27.5	26.8	11000	14000	0.09
RN206EM	30	53.5	16	36	35.5	8500	11000	0.11
RN207EM	35	61.8	17	46.5	48	7500	9500	0.2
RN208EM	40	70	18	51.5	53	7000	9000	0.27
RN219EM	95	151.5	32	208	262	3200	4000	2.18
RN220EM	100	160	34	235	302	3000	3800	2.65
RN222EM	110	178.5	38	278	360	2600	3400	3.3
RN228EM	140	221	42	302	415	1800	2400	5.95
RN307EM	35	68.2	21	62	63.2	7000	9000	0.32
RN308EM	40	77.5	23	81	87	6300	8000	0.41
RN309EM	45	86.5	25	93	98	5600	7000	0.61
RN310EM	50	95	27	105	112	5300	6700	0.79
RN312EM	60	113	31	142	155	4500	5600	1.11
RN313EM	65	121.5	33	170	188	4000	5000	1.57
RN328EM	140	260	62	545	690	1600	2000	13.2