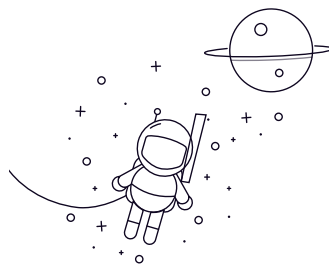
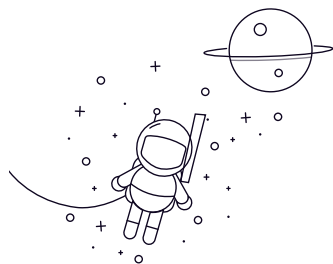


NF200 Series



Designación	Dimensiones principales (mm)					Clasificaciones de carga básicas (KN)		Velocidad limitada (rpm)		Peso (kg)
	rek	D	B	rs min	rs1min	Dinámico(Cr)	Estático (Cor)	Grasa	Aceite	
NF204E	20	47	14	1	0.6	17	14	17000	20000	0.109
NF205E	25	52	15	1	0.6	28	27	11000	14000	0.148
NF206E	30	62	16	1	0.6	36	36	8500	11000	0.22
NF207E	35	72	17	1.1	0.6	47	48	7500	9500	0.344
NF208E	40	80	18	1.1	1.1	52	53	7000	9000	0.39
NF209E	45	85	19	1.1	1.1	59	64	6300	8000	0.52
NF210E	50	90	20	1.1	1.1	61	69	6000	7500	0.56
NF211E	55	100	21	1.5	1.1	80	96	5300	6700	0.62
NF212E	60	110	22	1.5	1.5	90	102	5000	6300	0.84
NF213E	65	120	23	1.5	1.5	102	118	4500	5600	1.05
NF214E	70	125	24	1.5	1.5	112	135	4300	5300	1.29
NF215E	75	130	25	1.5	1.5	125	155	4000	5000	1.45
NF216E	80	140	26	2	2	132	165	3800	4800	1.74
NF217E	85	150	28	2	2	158	192	3600	4500	2.08
NF218E	90	160	30	2	2	170	203	3400	4300	2.5
NF219E	95	170	32	2.1	2.1	192	214	3200	4000	2.8
NF220E	100	180	34	2.1	2.1	208	226	3000	3800	3.14
NF221E	105	190	36	2.1	2.1	224	238	2800	3600	4
NF222E	110	200	38	2.1	2.1	239	342	2600	3400	5.11
NF224E	120	215	40	2.1	2.1	247	249	2200	3000	6.32
NF226E	130	230	40	2.1	2.1	358	372	2000	2800	7.38
NF228E	140	250	42	2.4	2.4	302	415	1800	2400	9.01