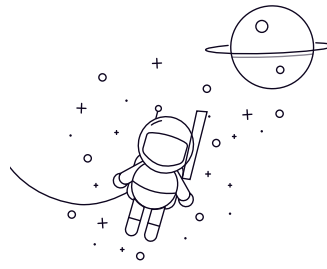
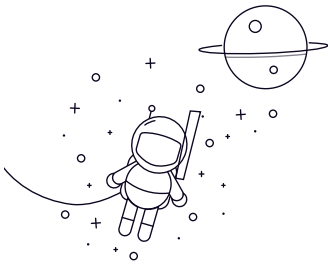


# N1000 Series



seleccionar Consulta Designación			Dimensiones principales (mm)					Clasificaciones de carga básicas (KN)		Velocidad limitada (rpm)	Peso (kg)
			rek	D	B	rs min	rs1min	Dinámico(Cr)	Estático (Cor)	Grasa	
N1005	25	47	12	0.6	0.3	15.1	14.1	16000	19000	0.091	
N1006	30	55	13	1	0.6	19.7	19.6	14000	16000	0.128	
N1007	35	62	14	1	0.6	22.6	23.2	12000	15000	0.176	
N1008	40	68	15	1	0.6	27.3	29	11000	13000	0.217	
N1009	45	75	16	1	0.6	31	34	9900	12000	0.276	
N1010	50	80	16	1	0.6	32	36	8900	11000	0.291	
N1011	55	90	18	1.1	1	37.5	44	8200	9700	0.435	
N1012	60	95	18	1.1	1	40	48.5	7500	8800	0.467	
N1013	65	100	18	1.1	1	41	51	7000	8200	0.477	
N1014	70	110	20	1.1	1	58.5	70.5	6500	7600	0.689	
N1015	75	115	20	1.1	1	60	74.5	6100	7100	0.727	
N1016	80	125	22	1.1	1	72.5	90.5	5700	6700	0.965	
N1017	85	130	22	1.1	1	74.5	95.5	5400	6300	1.01	
N1018	90	140	24	1.5	1.1	88	114	5100	5900	1.31	
N1019	95	145	24	1.5	1.1	90.5	120	4800	5600	1.38	
N1020	100	150	24	1.5	1.1	93	126	4600	5400	1.43	
N1021	105	160	26	2	1.1	105	142	4300	5100	1.81	
N1022	110	170	28	2	1.1	131	174	4100	4800	2.3	
N1024	120	180	28	2	1.1	139	191	3800	4400	2.4	
N1026	130	200	33	2	1.1	172	238	3400	4000	3.63	
N1028	140	210	33	2	1.1	176	250	3200	3800	3.98	
N1030	150	225	35	2.1	1.5	202	294	3000	3500	4.7	