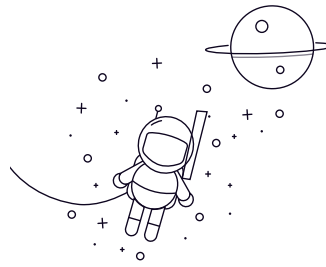
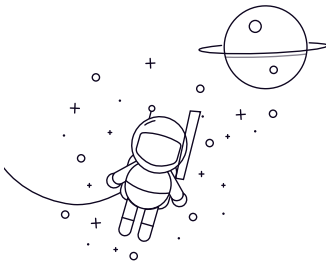


# NUP200 Series



seleccionar Consulta Designación	Dimensiones principales (mm)							Clasificaciones de carga básicas (KN)		Velocidad limitada (rpm)	Peso (kg)
	rek	D	B	rs min	rs1min	Dinámico(Cr)	Estático (Cor)	Grasa	Aceite		
NUP204E	20	47	14	1	0.6	25.7	22.6	15000	18000	0.122	
NUP205E	25	52	15	1	0.6	29.3	27.7	13000	15000	0.151	
NUP206E	30	62	16	1	0.6	39	37.5	11000	13000	0.226	
NUP207E	35	72	17	1.1	0.6	50.5	50	9500	11000	0.327	
NUP208	40	80	18	1.1	1.1	43.5	43	9400	11000	0.378	
NUP208E	40	80	18	1.1	1.1	55.5	55.5	8500	10000	0.426	
NUP209	45	85	19	1.1	1.1	46	47	8400	9900	0.432	
NUP209E	45	85	19	1.1	1.1	63	66.5	7600	9000	0.495	
NUP210	50	90	20	1.1	1.1	48	51	7600	9000	0.47	
NUP210E	50	90	20	1.1	1.1	66	72	6900	8100	0.54	
NUP211	55	100	21	1.5	1.1	58	62.5	6900	8200	0.638	
NUP211E	55	100	21	1.5	1.1	82.5	93	6300	7400	0.718	
NUP212	60	110	22	1.5	1.5	68.5	75	6400	7600	0.818	
NUP212E	60	110	22	1.5	1.5	97.5	107	5800	6800	0.923	
NUP213	65	120	23	1.5	1.5	84	94.5	5900	7000	1.02	
NUP213E	65	120	23	1.5	1.5	108	119	5400	6300	1.21	
NUP214	70	125	24	1.5	1.5	83.5	95	5500	6500	1.12	
NUP214E	70	125	24	1.5	1.5	119	137	5000	5900	1.3	
NUP215	75	130	25	1.5	1.5	96.5	111	5100	6000	1.23	
NUP215E	75	130	25	1.5	1.5	130	156	4700	5500	1.41	
NUP216	80	140	26	2	2	106	122	4800	5700	1.5	
NUP216E	80	140	26	2	2	139	167	4400	5100	1.67	
NUP217	85	150	28	2	2	120	140	4500	5300	1.87	

## NUP200 Series

NUP217E	85	150	28	2	2	167	199	4100	4800	2.11
NUP218	90	160	30	2	2	152	178	4300	5000	2.3
NUP218E	90	160	30	2	2	182	217	3900	4600	2.44
NUP219	95	170	32	2.1	2.1	166	195	4000	4700	2.78
NUP219E	95	170	32	2.1	2.1	220	265	3600	4300	3.02
NUP220	100	180	34	2.1	2.1	183	217	3800	4500	3.33
NUP220E	100	180	34	2.1	2.1	249	305	3500	4100	3.66