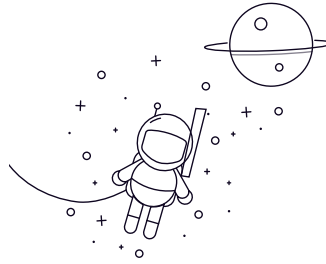


24000 Series



seleccionar	Consulta Designación	Dimensiones principales (mm)					Clasificaciones de carga básicas (KN)		Velocidad limitada (rpm)	Peso
		rek	D	B	rs	min Dinámico	(Cr) Estático (Cor)	Grasa Aceite (kg)		
24024	120	180	60	2	390	670	1500	2300	5.48	
24024K30	120	180	60	2	390	670	1500	2300	5.39	
24024K30W33C3	120	180	60	2	390	670	1500	2300	5.39	
24024W33C3	120	180	60	2	390	670	1500	2300	5.48	
24026	130	200	69	2	505	895	1300	2100	8.08	
24026K30	130	200	69	2	505	895	1300	2100	7.95	
24026K30W33C3	130	200	69	2	505	895	1300	2100	7.95	
24026W33C3	130	200	69	2	505	895	1300	2100	8.08	
24028	140	210	69	2	510	945	1200	1900	8.57	
24028K30	140	210	69	2	510	945	1200	1900	8.43	
24028K30W33C3	140	210	69	2	510	945	1200	1900	8.43	
24028W33C3	140	210	69	2	510	945	1200	1900	8.57	
24030	150	225	75	2.1	585	1060	1200	1800	10.7	
24030K30	150	225	75	2.1	585	1060	1200	1800	10.5	
24030K30W33C3	150	225	75	2.1	585	1060	1200	1800	10.5	
24030W33C3	150	225	75	2.1	585	1060	1200	1800	10.7	
24032	160	240	80	2.1	650	1200	1100	1700	13	
24032K30	160	240	80	2.1	650	1200	1100	1700	12.8	
24032K30W33C3	160	240	80	2.1	650	1200	1100	1700	12.8	
24032W33C3	160	240	80	2.1	650	1200	1100	1700	13	
24034	170	260	90	2.1	800	1470	1000	1600	17.7	
24034K30	170	260	90	2.1	800	1470	1000	1600	17.4	

24000 Series

24034K30W33C3	170	260	90	2.1	800	1470	1000	1600	17.4
24034W33C3	170	260	90	2.1	800	1470	1000	1600	17.7
24036	180	280	100	2.1	965	1770	950	1500	23.3
24036K30	180	280	100	2.1	965	1770	950	1500	22.9
24036K30W33C3	180	280	100	2.1	965	1770	950	1500	22.9
24036W33C3	180	280	100	2.1	965	1770	950	1500	23.3
24038	190	290	100	2.1	995	1850	900	1400	24.3
24038K30	190	290	100	2.1	995	1850	900	1400	23.9