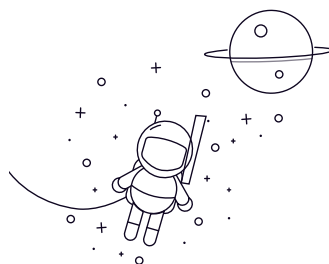


2200 Series



seleccionar	Consulta	Designación de rodamientos	Dimensión (mm)				Capacidades de Clasificaciones carga básicas		de velocidad		Peso
			rek	D	B	rs min	cr	cor	Grasa	Aceite (Kg)	
	10	30	14	0.6	7.3	1.59	19000	23000	0.047		
	12	32	14	0.6	7.6	1.73	17000	20000	0.051		
	15	35	14	0.6	7.7	1.85	15000	18000	0.06		
	17	40	16	0.6	9.8	2.41	13000	16000	0.088		
	20	47	18	1	12.6	3.3	12000	14000	0.14		
	20	47	18	1	12.6	3.3	12000	14000	0.137		
	25	52	18	1	12.3	3.45	10000	12000	0.157		
	25	52	18	1	12.3	3.45	10000	12000	0.153		
	30	62	20	1	15.2	4.5	8600	10000	0.256		
	30	62	20	1	15.2	4.5	8600	10000	0.25		
	35	72	23	1.1	21.5	6.6	7500	8800	0.392		
	35	72	23	1.1	21.5	6.6	7500	8800	0.382		
	40	80	23	1.1	22.3	7.35	6700	7900	0.493		
	40	80	23	1.1	22.3	7.35	6700	7900	0.482		
	45	85	23	1.1	23.2	8.15	6000	7100	0.54		
	45	85	23	1.1	23.2	8.15	6000	7100	0.528		
	50	90	23	1.1	23.2	8.45	5500	6400	0.583		
	50	90	23	1.1	23.2	8.45	5500	6400	0.569		
	55	100	25	1.5	26.5	9.9	5000	5800	0.787		

2200 Series

2211K	55	100	25	1.5	26.5	9.9	5000	5800	0.769
2212	60	110	28	1.5	34	12.6	4600	5400	1.08
2212K	60	110	28	1.5	34	12.6	4600	5400	1.06
2213	65	120	31	1.5	43.5	16.4	4200	5000	1.44
2213K	65	120	31	1.5	43.5	16.4	4200	5000	1.41
2214	70	125	31	1.5	44	17.1	3900	4600	1.52
2215	75	130	31	1.5	44.5	17.8	3700	4300	1.58
2215K	75	130	31	1.5	44.5	17.8	3700	4300	1.54
2216	80	140	33	2	48.5	19.9	3400	4000	1.99
2216K	80	140	33	2	48.5	19.9	3400	4000	1.95
2217	85	150	36	2	58	23.6	3200	3800	2.54